



SNOW COLLEGE

RESIDENCE LIFE



Welcome Home Badgers!

Snow College Residence Life.



Campus living puts you in the center of it all! Enjoy the convenience of walking to class and living in a safe, secure and affordable environment. Exploring the realm of Snow College means learning about yourself and others by joining a community filled with opportunity. By living on-campus you will discover all kinds of people to live and learn with, as well as a residence hall staff that is there to help you discover the college experience.

Snow College offers affordable housing, one-third to one-half less the cost of other higher education institutions in the state. With those savings you can feel great about the choices of living on-campus and the many benefits you will come to enjoy!

We invite you to explore this guide and our website to learn more about living options on-campus at Snow College. If you are planning to visit our beautiful campus, call ahead and schedule your on-campus housing tour to help you gain a better feel for Residence Life.

Note: Housing is usually still available as late as August, but we encourage all students to apply by March 1st. Apply before July 1 for our Suite Deals.



Our Mission

We Provide **Clean, Safe and Secure** living environments **TO PROMOTE** maturity, diversity and academic success. By enhancing **Personal Growth** through developing **Responsibility** & Encouraging Friendship, we will aid in **The Students of Today** becoming **The Leaders of Tomorrow.**

The Office of Residence Life

Residence Hall Features & Amenities

FEATURE & AMENITIES	ANDERSON	CASTILLEJA	NUTTALL	SNOW	SUITES
XL Twin Bed per Student	✓		✓		✓
Standard Twin Bed per Student		✓		✓	✓
Full Size Refrigerator		✓	✓	✓	✓
Mini Refrigerator	✓		✓		
One Full Bathroom - Sink, Toilet & Shower		✓	✓	✓	
Two Full Bathrooms - Sink, Toilet & Shower					✓
Community Bathrooms - Shared Sink, Toilet & Shower	✓		✓	✓	
Built-In Desks with Chairs & Dressers	✓	✓	✓	✓	
Built-In Closets	✓	✓	✓	✓	✓
Movable Desks with Chairs & Dressers					✓
Blinds / Window Treatments	✓	✓	✓	✓	✓
Air Conditioning	✓				✓
Standard Heating	✓	✓	✓	✓	✓
FREE Internet - Wired & Wireless (WiFi)	✓	✓	✓	✓	✓
Utility Costs Included	✓	✓	✓	✓	✓
TV in Each Room	✓		✓		
Meal/Munch Cards	✓	✓	✓	✓	✓
FREE CableTV, FREE Laundry, FREE Parking	✓	✓	✓	✓	✓

93%

CURRENT STUDENTS
WOULD RECOMMEND
OTHERS TO ATTEND
SNOW COLLEGE

YOU CAN SAVE *TIME* AND
MONEY
LIVING ON-CAMPUS



GO
BADGERS



RESEARCH INDICATES
THAT STUDENTS WHO LIVE
ON-CAMPUS EARN HIGHER
GRADES & ARE MORE
LIKELY TO GRADUATE
FROM COLLEGE

Anderson Hall

Football Living Learning Community



Description

- All-male, first year football players
- Houses 52 students
- Fully furnished single-sleep study rooms
- Features spacious lobby, shared bathrooms, game room, free parking, free internet and wifi, community kitchen, free cable tv, plus free laundry facilities,

Requirements

To live in Anderson Hall, you must:

- Be a male, football player
- Be on the approved football list
- Be registered for at least 10 credits
- Have an Athletic Meal Plan

Room Dimensions and Amenities

- Room space- 9' 9 $\frac{3}{4}$ " x 15'
- Window - 5' 1 $\frac{1}{2}$ " x 4' 7 $\frac{1}{2}$ "
- Closet - 1' 11 $\frac{1}{4}$ " x 3' 10 $\frac{1}{2}$ "
- Twin extra-long bed - 39" x 80"
- Individual desk and chair per student
- Built in closets
- Mini-fridge



For More Information Visit:
snow.edu/housing

Castilleja Hall

Cooking Apartments

Description

- Co-ed by floor
- Houses 102 students
- Fully furnished 3-bedroom apartments
- Either 4-person apartments or 5-person apartments
- Private or shared bedroom
- Features spacious lobbies, game room equipment, free parking, free internet and wifi, free cable tv, plus free laundry facilities

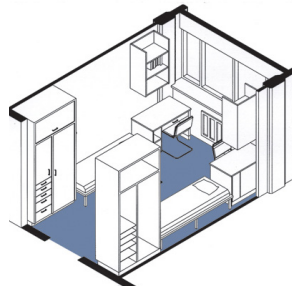
Requirements

To live in Castilleja Hall, you must:

- Be registered for at least 10 credits
- Have a \$200 Munch Card (for snacks & food)

Room Dimensions and Amenities

- Apartment space- 16' 5 ½" x 10' 4"
- Bedroom space- 14' 6 ½" x 10' 7 ¾"
- Window - 3' 11" x 3' 10"
- Closet- 2' 2" x 4' 6"
- Standard twin mattress - 39" x 75"
- Desk and chair per student
- Built in closets
- Dining room table and chairs
- Couch
- Pantry
- One-bathroom per apartment
- Full kitchen (stove, sink, full refrigerator)



Suites at Academy Square

6 & 8 Person Suites



Description

- Co-ed by wing
- Houses 392 students
- Fully furnished 6 & 8 person suites
- 3 or 4 bedroom suites
- Features spacious lobbies, exercise room, vending room, game room, free parking, free internet and wifi, free cable tv, plus free laundry facilities, and shared in-suite bathrooms
- ADA accommodations

Requirements

To live in the Suites, you must:

- Be registered for at least 10 credits
- Have a \$795 Badger Buck Card



Room Dimensions and Amenities

- 6 Person Suite Shared Room
 - Room A- 19' 5" x 11' 3 1/2"
 - Room B- 16' 7 3/4" x 11' 5 1/2"
 - Room C- 19' 7" x 11' 5 3/4"
- 8 Person Suite Shared Room
 - Rooms A & D- 19' 4 1/2" x 11' 2"
 - Window- 3' 2 3/4" x 4' 6"
 - Rooms B & C- 16' 7 1/2" x 11' 5 1/2"
 - Window- 8' 4" x 4' 6"
- 8 Person Private Room
 - Room- 10' 6" x 10' 7 1/2"
 - Window- 3' 10 3/4" x 4' 6"
- Two bathrooms with showers
- Twin extra-long bed and mattress- 39" x 80"
- Desk and chair per student
- Built in closets and moveable dressers
- Dining room table and chairs
- Couch
- Pantry
- Two-bathrooms per suite
- Kitchenette (microwave, sink, refrigerator)



Nuttall Hall

Athletic Living Learning Community
Cooking Apartments & Sleep Study Rooms

Description

- Co-ed by floor
- Houses 24 cooking, 24 sleep study rooms
- Fully furnished 3-bedroom apartments
- Fully furnished standard sleep study rooms
- Private bedrooms
- Features spacious lobbies, game room equipment, free parking, free internet and wifi, free cable tv, plus free laundry facilities

Requirements

To live in Nuttall Hall, you must:

- Be either a Volleyball, Women's Basketball or Men's Basketball player
- Be registered for at least 10 credits
- Have a \$200 Munch Card (for snacks and food)



Room Dimensions and Amenities

- Sleep Study
 - Room- 14' 10" x 9' 11"
 - Window- 4' 1 1/4" x 2' 8 1/2"
 - Closets- 2' 9 3/4" x 4' 1 3/4"
- Shared bathrooms
- Cooking Apartment
 - Apartment space- 23' 3" x 8' 5 1/2"
 - Bedroom space- 14' 10" x 9' 11 3/4"
 - Window in bedroom- 2' 8 1/2" x 6' 2"
 - Closet- 1' 11 3/4" x 4' 1 3/4"
- Twin X-long bed and mattress- 39" x 80"
- Desk and chair per student
- Built in closets
- Dining room table and chairs
- Couch
- Pantry
- One-bathroom per apartment
- Full Kitchen (stove, sink, full refrigerator)



Snow Hall

Fine Arts Living Learning Community
Cooking Apartments & Sleep Study Rooms



Description

- Co-ed by floor
- Houses 54 students
- Fully furnished 3-bedroom apartments
- Fully furnished standard sleep study rooms
- Either 4-person apartments or 5-person apartments
- Either private or shared sleep study rooms
- Private or shared bedroom
- Features spacious lobbies, game room equipment, free parking, free internet and wifi, free cable tv, plus free laundry facilities

Requirements

To live in Snow Hall, you must:

- Be a Fine Arts major or minor (Art, Communication, Dance, Music, or Theatre)
- Be registered for at least 10 credits
- Have a \$200 Munch Card (for snacks and food) in Apartments, \$795 Badger Bucks Card for Sleeping Study Rooms



Room Dimensions and Amenities

- Sleep Study Room - 14' 9 $\frac{3}{4}$ " x 10' 5 $\frac{3}{4}$ "
Window- 6' x 2' 9"
Closet- 2' x 4' 4 $\frac{1}{2}$ "
- Standard Twin Mattress - 39" x 75"
- Desk and chair per student
- Built in closets and dressers
- Shared bathrooms
- Cooking Apartment
Apartment space- 18' 1" x 10' 3"
Bedroom space- 10' 6" x 15'
Window in bedroom- 6' $\frac{1}{2}$ " x 2' 9"
Closet- 4' 4 $\frac{1}{2}$ " x 2'
- Standard twin mattress - 39" x 75"
- Desk and chair per student
- Built in closets and dressers
- Dining room table and chairs
- Couch
- Pantry
- One-bathroom per apartment
- Full kitchen (stove, sink, full refrigerator)

Price Guide

Snow College provides some of the most affordable student housing in the state. We offer many student housing options to choose from!

Application Fee: \$50 (non-refundable)

Reservation Fee: \$200

Suites at Academy Square

Shared room (8 person suite)	\$949
Shared room (6 person suite)	\$1,099
Private room (8 person suite)	\$1,249
Private room (double as private)	\$1,519**

***Double as a private based on availability*

**Badger Bucks meal plan required for all non-cooking rooms and Suites*

Cooking Apartments*

(Castilleja, Mary Nielson, Snow Halls)

Shared room	\$ 875 - \$949
Private room	\$ 1,125 - \$1,199

**A Badger Bucks Munch Card is required for all cooking apartments*

Non-Cooking Rooms (Snow Hall)

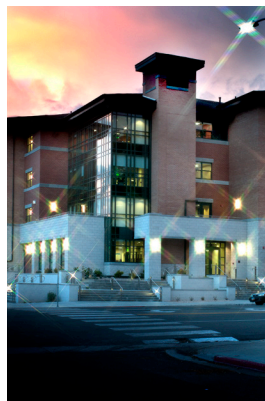
Shared room	\$799
Private room	\$949

**Badger Bucks meal plan required for all non-cooking rooms and Suites*

Student ID Card

Your Snow College Student ID card now acts as a debit card and you can track your remaining balance. Use your card for:

- Badger Bucks
- Meal Plans
- Key Card for your assigned building
- Events and Activities
- Sporting Events
- ID for Student Testing Center
- Library Card
- Activity Center



Badger Bucks Card

Residents that live on-campus are required to purchase a Badger Buck Plan. Plans vary per building as follows:

Suites at Academy Square and non-cooking rooms	\$795/Badger Bucks (Primary meal plan)
Football LLC	\$450/Badger Bucks (Primary meal plan)
Cooking Apartments/Nuttall Hall	\$200/Badger Bucks (Munch Card)

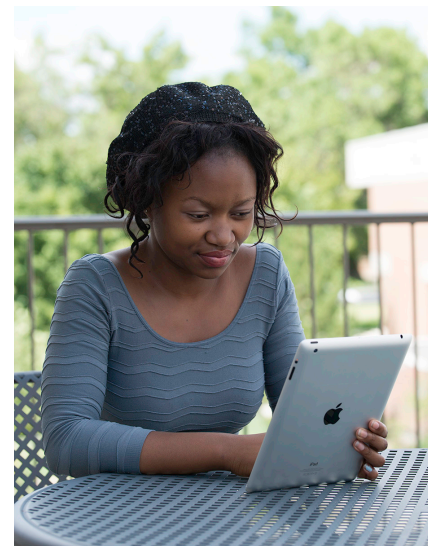
Students, parents and friends may add funds to the Badger Bucks account allowing students to make purchases at the Badger Den (cafeteria), Snow College Bookstore (books and school supplies), Badger Bistro and the Library (for copies)!

Badger Bucks roll over each semester and students may cash out the remaining balance at the end of each Academic Year through an application.

How To Apply

1. Go to www.snow.edu/housing/apply
2. Complete the online housing application.

Note: If you are relying on Federal Financial Aid to assist in covering your housing charges you MUST complete the application process BEFORE June 1 for funds to be available at the start of the fall semester. For details contact a Student Success Advisor at financialaid@snow.edu.



Questions?

Please contact us:

Office of Residence Life
Snow College
Greenwood Student Center
150 College Avenue
Ephraim, UT 84627
Email: housing@snow.edu
Phone: **435.283.7280**
800.848.3399

Checkout our website at
www.snow.edu/housing.

Cost of Living

On-Campus vs. Off-Campus

**YOU CAN SAVE
UP TO 25%**
by living on-campus!

On-Campus

Per Semester	Double/Shared Apt	Private Apt
Rent	\$875.00	\$1125.00
Reservation Fee - Refundable	\$200.00	\$200.00
Application Fee	\$50.00	\$50.00
Utilities	Included	Included
Cable TV	Included	Included
Internet	Included	Included
Laundry	Included	Included
Food (Monthly Moderate Cost)	\$200.00	\$200.00
TOTAL MONTHLY	\$281.25	\$343.75
TOTAL SEMESTER	\$1125.00	\$1375.00

Off-Campus

Per Semester	Double/Shared Apt	Private Apt
Rent*	\$1105.00	\$1400.00
Security Deposit	\$250.00	\$250.00
Utilities**	Varies	Varies
Cable TV**	Varies	Varies
Internet**	Varies	Varies
Laundry (Month)	\$44.00	\$44.00
Food*** (Monthly Average Cost)	\$200.00	\$200.00
TOTAL MONTHLY	\$388.75	\$506.25
TOTAL SEMESTER	\$1555.00	\$2025.00

*Please be advised that rent costs are averaged from local popular apartment complexes. The cost of rent within individual complexes may be substantially lower or higher than the figures represented above.

**Utilities, Cable TV and Internet connections may or may not be charged as additional costs at off-campus housing, please check with the individual complexes.

***Food costs are derived from Snow College student surveys.

Snow College

College Facts

Founded in 1888.
Located centrally in rural Sanpete County
Ephraim, Utah.
Ephraim's Population: **6,200**
Sanpete County Population: **27,900**

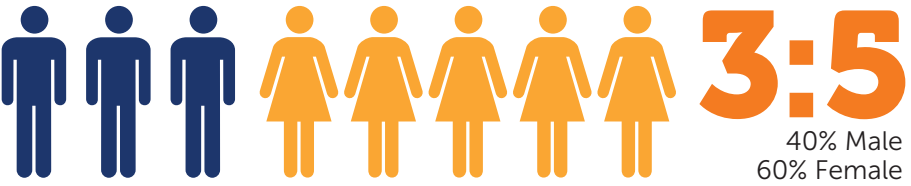


**CURRENT NUMBER
OF STUDENTS:**
4600

23
Average ACT
3.5
Average GPA

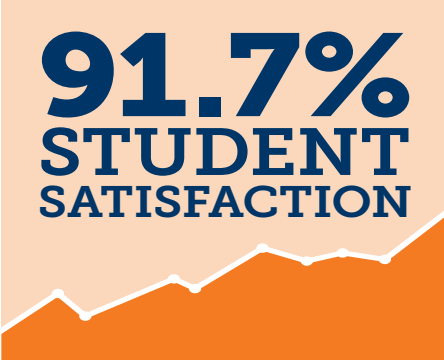


MALE-TO-FEMALE RATIO ON-CAMPUS HOUSING



20/1 **STUDENT-
FACULTY
RATIO**

average class size
15





150 College Avenue
Ephraim, Utah 84627

Office of Residence Life
435.283.7280 or 800.848.3399
Email: housing@snow.edu
Website: **www.snow.edu/housing**



**SNOW
COLLEGE**

